

QUANTUM:EV SUPERFAST

EV OPENCHARGE

Type 2, Mode 3 Charging Socket(s)
(GPRS/Ethernet Communication)
11kW or 22kW

ROLEC

EV Charging

MANUFACTURED IN THE UK



COMPLIANT



The QUANTUM:EV OPENCHARGE **SUPERFAST** pedestal is a sophisticated and resilient EV charging point, providing a combination of durability and impeccable design for all locations.

This ultra-modern OCPP compliant pedestal can offer a simple pay-to-charge solution via the EV driver's smartphone and/or RFID card/fob authorisation through any chosen OCPP back office management system.

Available in either 1way or 2way versions, providing Mode 3 superfast charging in 11kW or 22kW speeds, this unit features a built in GPRS antenna and Ethernet connection.



Unit shown: QUANTUM:EV **SUPERFAST**
EV OPENCHARGE
2way Socket (Type 2) Charging Pedestal

PRODUCT FEATURES

- Mode 3 (IEC 61851-1) superfast charging
- Available in 1way / 2way & 11kW (16A) / 22kW (32A) versions
- Type 2 (IEC 62196) 3 phase charging socket(s) c/w security hatchlock(s)
- OCPP 1.6 compliant (Can integrate with any back office)
- Remote firmware updates
- Built-in RFID reader
- Photocell controlled LED amenity lighting head
- Surface or roof mountable
- Built-in AC overload protection (MCB)
- Built-in AC & DC fault protection (RCD)
- Built-in LED charging status indicator socket halo(s)
- Built-in class 1 MID compliant kWh meter(s)
- EV driver Pay-to-Charge smartphone integration
- OLEV Grant Fundable under the Workplace Charging Scheme
- Easy to install & maintain
- IP Rated, UV stabilised, fire retardant, IK10 impact & corrosion resistant

Chargepoint Management

Unless otherwise stated at time of order, EV OPENCHARGE units will be automatically programmed to operate via the Rolec VENDELECTRIC back office management system.



See the VENDELECTRIC sheet Overview for details



OCPP 1.6
Compliant



Grant
Fundable



GPRS / Ethernet
Connectivity



Superfast
3 Phase Charging



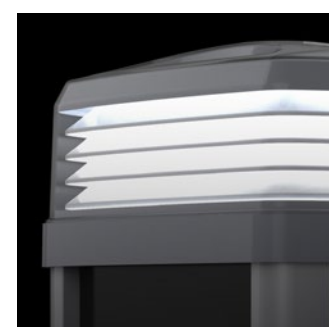
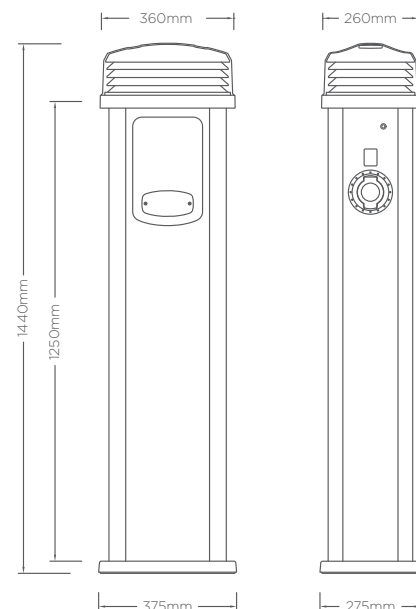
Branding & Colour
Options Available



LED Amenity
Lighting

SPECIFICATIONS

Product Code	OCPP0412	OCPP0413	OCPP0422	OCPP0423
Charging Socket(s)	1x Type 2 (IEC 62196) 		2x Type 2 (IEC 62196) 	
Rated Output	11kW	22kW	11kW	22kW
Rated Current	16A	32A	16A	32A
Charge Protocol	Mode 3			
Input Voltage	400V AC/50Hz (3 Phase)			
AC Overload Protection	1x C20A MCB	1x C40A MCB	2x C20A MCBs	2x C40A MCBs
AC & DC Fault Protection	1x Type B RCD		2x Type B RCDs	
Cable Terminals	5x 50mm			
Communications	GPRS (Recommended signal strength of 14 CSQ or above) RJ45 ethernet connection			
Standby Consumption	Approx 0.4kWh per day			
Certifications & Compliances	EV Charging Compliance – EN 61851-1:2011, BS EN 62196-1:2014, BS EN 62196-2:2017 Wiring Regulations – BS 7671 EMC Compliance – EN 301 489-01 V2.2.0, EN 301 489-03 V2.1.1, EN 301 489-52 V1.1.0, EN 50470-1:2006 (1x Skt) or EN 55032:2012 (2x Skts) Spectrum/Telecom – EN 301 511 V9.0.2, EN 300 330 v2.1.1 RED – 2014/53/EU – EN 62311:2008 Safety Compliance (LVD) – 2014/35/EU Impact Rating – IK10 (BS EN 62262) Environmental Protection – Enclosure IP66, Socket IP54 (BS EN 60529:1992+A2:2013)			
 				
Dimensions	375mm x 1440mm x 275mm (W x H x D)			
Substructure Material	2.5mm thick, high quality 6063 extruded aluminium with a 25 micron hard anodised protective cosmetic finish			
Panel Material	3.2mm Aluminium composite			
Lens Material	High impact resistant 3mm polycarbonate			
Base Material	High impact resistant, heavy-duty 5mm polycarbonate			
Lid/Sandwich Material	High impact resistant polycarbonate			
Operating Temperature	-30°C to +50°C			
Standard Panel Colour	Black (Other colours available upon request)			



EV OPENCHARGE

- Smart charging control via mobile phone and/or RFID
- Can integrate with any chosen OCPP back office management system
- Open Charge Point Protocol 1.6 (OCPP 1.6)
- On board GPRS modem with antenna
- Ethernet connection

OPTIONS & ACCESSORIES

- RFID card/fobs
- Load Manager system (electrical distribution management)
- Corporate branding (colours, logo badge, etc.)
- Galvanised steel ground mounting base
- Protection barriers
- Charge point signage
- EV charging cables (Type 1 to Type 2 or Type 2 to Type 2)



Images are for marketing purposes only and are not contractual © 2020



Head office contact:
t: +44 (0) 1205 724754
f: +44 (0) 1205 724876
rolec@rolecserv.co.uk

Rolec Services Ltd
Ralphs Lane, Frampton West
Boston, Lincolnshire
UK. PE20 1QU

 @RolecEV
 /Rolec-Services
www.rolecserv.com

EVQROC3D-V02-R2 Quantum EV OpenCharge SuperFast - Data Sheet