

PS – Backup tank

Available tank sizes:

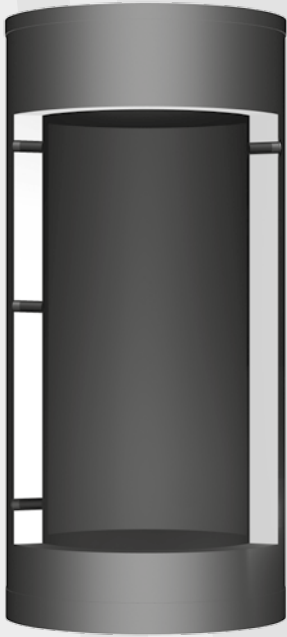
500 l, 800 l, 1000 l, 1250 l, 1500 l, 2000 l, 2500 l, 3000 l, 4000 l, 5000 l,
6000 l, 7000 l, 8000 l, 10000l, 15000l, 20000 l

Backup tanks PS

The backup tanks of the PS series are made of steel (S 235 JR).

For **PS backup tanks**, the sleeves are arranged so that these tanks are optimally suited for volume expansion of other tanks.

PRODUCT DESCRIPTION



PS – Backup tank for heating and for volume expansion for other tanks

Simple buffer tank made of steel (S235JR) for heating applications, applications with freshwater stations for hygienic domestic water preparation and volume expansion of PC, PC 2WR, PH and FS tank. The tank stands on a stand ring. The polyester fibre fleece insulation must be ordered separately (compare accessories).

Area of use

Universal backup tank for heating and solar systems. Optimised for volume expansion of other stratified tanks PC, PC 2WR, PH, fresh water tanks FS/1R and FS/2R .

Product benefits

- Simple and cost-effective backup tank
- 4 temperature measuring points (contact sensor sleeves) on tank
- Access flange DN 200 from 1500 litres
- Upwards of 2,000l with larger heating connections

Standards, guidelines and regulations

- "Pressure Equipment Directive" 97/23/EC
- Sized according to guideline AD-2000
- Welding as per EN 287-1 and EN ISO 3834-2

SPECIFICATIONS

Max. operating temperature	110°C
Max. tank operating pressure:	3 bar
Boiler/heating connections	Rp 6/4" / Rp 2" (partially with inflow absorber)
Cylinder feed and drain cock connections	Rp 1/2"
Thermometer connection	Rp 1/2"

Specifications

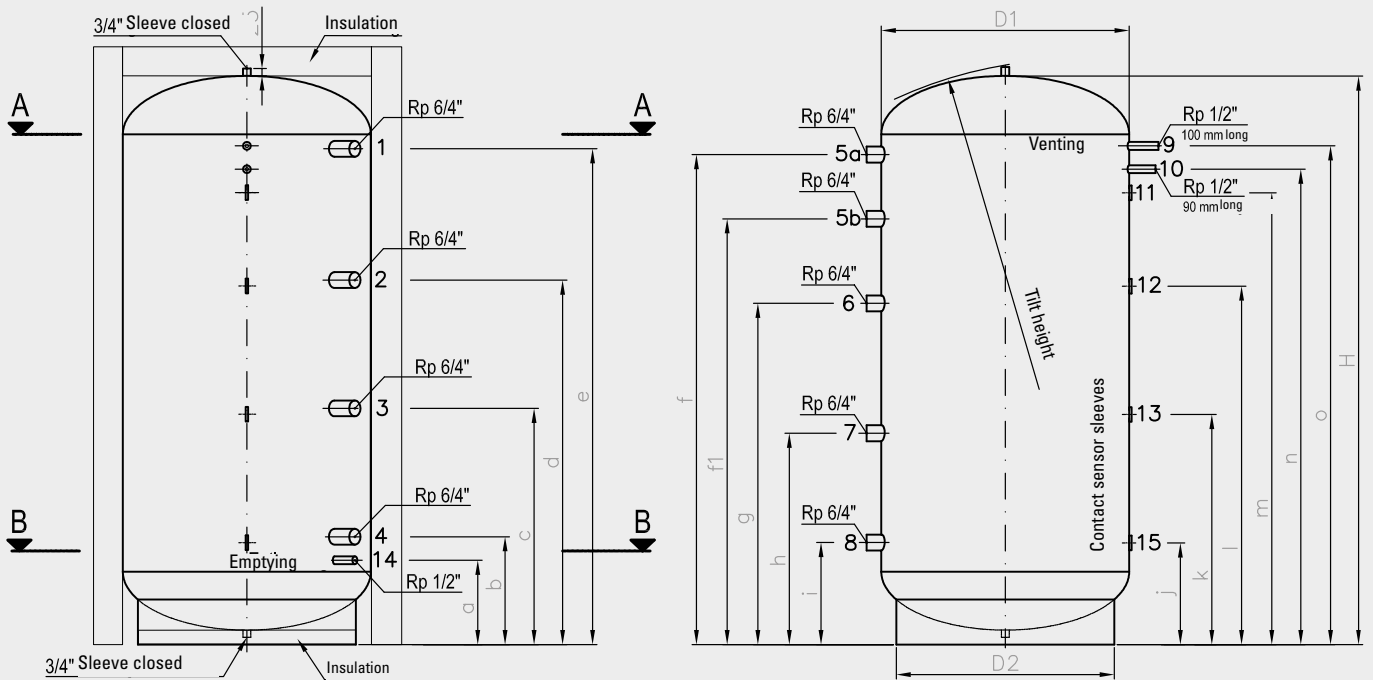
Type	PS 500	PS 800	PS 1000-B	PS 1000-S	PS 1250	PS 1500	PS 2000	PS 2500	PS 3000	PS 4000	PS 5000
Item no.	1611199	1611200	1611201	1611202	1611203	1611204	1611205	1611206	1611207	1611208	1611209
Nominal volume [l]	530	766	980	937	1260	1540	1930	2430	2910	3920	4950
Height without insulation [mm] ¹	1760	1910	1950	2120	2200	2190	2280	2170	2660	2290	2800
Height with insulation [mm] ¹	1860	2010	2050	2220	2300	2290	2380	2270	2760	2390	2900
Diameter without insulation [mm] ¹	650	750	850	790	900	1000	1100	1300	1250	1600	1600
Diameter with insulation [mm] ¹	850	950	1050	990	1100	1200	1300	1500	1470	1820	1820
Tilt height [mm] ¹	1800	1965	2020	2180	2270	2280	2380	2350	2780	2520	2945
Weight [kg]	130	150	163	168	204	236	267	403	415	510	520

¹) All size specifications have a tolerance range of +/- 3%

PS BACKUP TANK

mastersolar

DIMENSIONS AND SLEEVE ASSIGNMENT



Sleeve assignment

No.	Dimension	Use	Comment
1	Rp 6/4"	Functional sleeve	e.g. PWT
2	Rp 6/4"	Functional sleeve	e.g. PWT
3	Rp 6/4"	Functional sleeve	e.g. PWT
4	Rp 6/4"	Functional sleeve	e.g. PWT
5a	Rp 6/4"	Expansion sleeve	other tank
5b	Rp 6/4"	Expansion sleeve	only for PS 1000-S
6	Rp 6/4"	Expansion sleeve	other tank
7	Rp 6/4"	Expansion sleeve	other tank
8	Rp 6/4"	Expansion sleeve	other tank
9	Rp 1/2"	Venting sleeve	fill and drain valve
10	Rp 1/2"	Sleeve for thermometer sensor pocket	Thermometer
11	Ø 6 mm	Contact sensor sleeve	T sensor:
12	Ø 6 mm	Contact sensor sleeve	T sensor:
13	Ø 6 mm	Contact sensor sleeve	T sensor:
14	Rp 1/2"	Venting sleeve	fill and drain valve
15	Ø 6mm	Contact sensor sleeve	T sensor

DIMENSIONS

Table of dimensions as per illustrations [mm]

Type	PS 500	PS 800	PS 1000-B	PS 1000-S	PS 1250	PS 1500	PS 2000	PS 2500	PS 3000	PS 4000	PS 5000
H	1760	1910	1950	2120	2200	2190	2280	2170	2645	2290	2790
D1	650	750	850	790	900	1000	1100	1300	1250	1600	1600
D2	850	950	1050	990	1100	1200	1300	1500	1470	1820	1820
Tilt height	1800	1965	2020	2180	2270	2280	2380	2350	2780	2520	2945
a	240	265	290	270	295	340	350	400	390	450	455
b	320	345	370	350	375	420	430	480	470	480	500
c	730	790	810	850	900	910	940	920	1080	945	1145
d	1140	1235	1250	1350	1420	1400	1450	1370	1690	1045	1790
e	1550	1680	1700	1850	1940	1890	1960	1810	2295	1870	2370
f	1540	1680	1680	1900	1700	1890	1950	1810	2200	1700	2300
f1	–	–	–	1680	–	–	–	–	–	–	–
g	1150	1170	1170	1170	1170	1280	1370	1360	1460	1170	1600
h	720	725	725	725	725	775	860	880	880	725	950
i	270	350	350	350	350	350	350	400	415	350	350
j	260	325	350	330	335	400	410	450	440	495	505
k	710	770	790	830	880	890	920	890	1050	915	1115
l	1120	1215	1230	1330	1400	1380	1430	1340	1660	1375	1760
m	1430	1535	1550	1740	1800	1760	1830	1670	2155	1725	2225
n	1510	1615	1630	1820	1880	1840	1910	1750	2235	1805	2305
o	1565	1695	1710	1900	1960	1920	1990	1830	2315	1885	2385

INSULATION FOR BACKUP TANK



Polyester fibre fleece insulation for backup tanks

Three-part polyester fibre fleece insulation, 100 mm; with 1 mm thick textured grey polystyrene outer shell (RAL9022); shell assembled with clip locking rails, including lid and base insulation. Best heat insulation properties guaranteed, insulation fire resistance class B2, CFC-free and 100% recyclable.

Specifications

Property	Test method	Value	Unit
Density	-	15	kg/m ³
Fogging behaviour	DIN 75201 B	< 0,2	mg
Formaldehyde emission	VDA 275	< 2	mg/kg
Fire test	DIN 75200	< 100	mm/min
Fire resistance class	DIN 4102	B1	-
Fire resistance class in a compound	DIN 4102	B2	-
Continuous connection temperature	-	max. 130	°C
Colour	-	white	-
Thermal conductivity of the insulation	-	0,039	W/mK

POLYESTER FIBRE FLEECE INSULATION FOR PS

Dimensions

Type	ISOV-C PS 500	ISOV-C PS 800	ISOV-C PS 1000B	ISOV-C PS 1000S	ISOV-C PS 1250	ISOV-C PS 1500	ISOV-C PS 2000	ISOV-C PS 2500	ISOV-C PS 3000	ISOV-C PS 4000	ISOV-C PS 5000
Item no.	1611212	1611212	1611214	1611215	1611216	1611217	1611218	1611219	1611220	1611221	1611222
Outer diameter	850 mm	950 mm	1050 mm	990 mm	1100 mm	1200 mm	1300 mm	1500 mm	1470 mm	1820 mm	1820 mm
Material thickness	100 mm	100 mm	100 mm	100 mm	100 mm	100 mm	100 mm	100 mm	110 mm	110 mm	110 mm
Energie efficiency class acc. to ErP	C	C	C	C	C	C	C	No details	No details	No details	No details
Heat losses acc. to ErP	107 W	123 W	139 W	143 W	160 W	172 W	183 W	No details	No details	No details	No details