

## Roofing system

# Glass glass module for roofing applications and carports

### 360 Wp bifacial



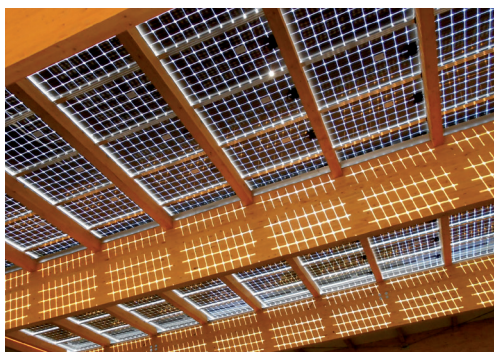
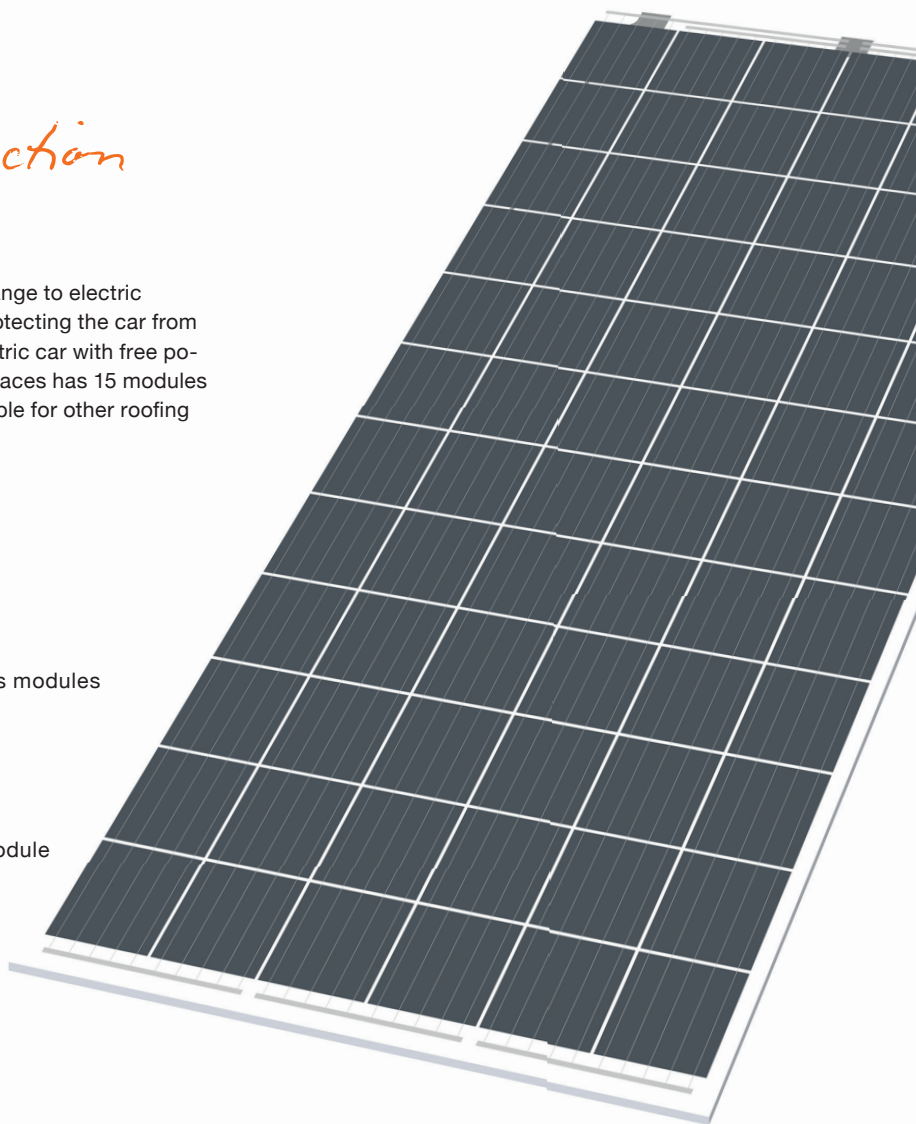
Eine Marke von  
**SONNENKRAFT**

*NEW! Energy & function  
with design*

More and more companies and private persons change to electric mobility. Perfect because the carport is not only protecting the car from environmental influences but also provides the electric car with free power from the sun. An E-Carport with two parking spaces has 15 modules installed - this means 5 kWp of power. Also applicable for other roofing applications.

*Advantages:*

- // Brings light into the carport - use of glass glass modules for your carport roof
- // Complete system including substructure & sealing of the modules
- // Modular set-up starting with 2 parking lots
- // Junction box integrated on the edges of the module
- // Also applicable for other roofing applications



## ROOFING SYSTEM

## KPV GML NEC 360Wp BF

## Module specifications

Type	P <sub>mp</sub> [W <sub>p</sub> ]	U <sub>mp</sub> [V]	I <sub>mp</sub> [A]	U <sub>oc</sub> [V]	I <sub>sc</sub> [A]	efficiency rate	area per kWp
360 bifacial	360 Wp	40,77V	8,83A	48,67V	9,42A	17,6%	5,7m <sup>2</sup>

## Electrical data

<b>72 crystalline cells</b>	157mm x 157mm
<b>Connecting System</b>	Decentralized junction box (3 pcs.), MC4 — connectors 4 mm <sup>2</sup>
<b>Max. system voltage</b>	1000V DC
<b>Power tolerance</b>	(+5W/-0W) Measurement: STC (standard test conditions)
<b>Temperature coefficients</b>	P <sub>mp</sub> -0,42 %/K U <sub>oc</sub> -0,32%/K I <sub>sc</sub> +0,047%/K
<b>Max. reverse over current</b>	15A
<b>Ambient temperature</b>	+85°C up to -40°C
<b>Efficiency guarantee</b>	min. 97% in the first year, afterwards max. 0,70 % reduction p.a. up to 25 years
<b>Product guarantee</b>	12 years

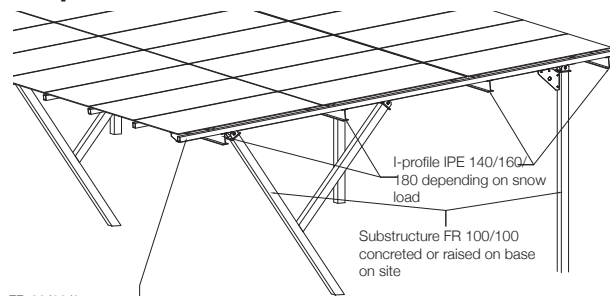
## Technical data

<b>Size</b>	2020 mm x 1015 mm x 13 mm (+/- 2 mm)
<b>Weight</b>	60 kg
<b>Glass specification</b>	VSG 6mm
<b>Backside material</b>	VSG 6mm
<b>Packaging</b>	15 modules/pal.

## Carport Data

<b>Material</b>	Steel construction, all parts hot-dipped, mounting material corresponds with norm
<b>Pitch</b>	5° slope in 2nd axis can be balanced up to 3° with intelligent bolt system
<b>Sealing</b>	Rubber pad, cover rail Alu nature with rubber seal or bitumen sealing tape with sheet metal cover and special glass glue (2 sealing layers)
<b>Transmittance</b>	14%

## Carport



FR 60/60/3  
Glass support 2cm on whole length right & left  
Glass dimension approx. 2x1m

**Bifacial cell technology**

- // up to 360 Wp overall performance thanks to active module back side
- // Use of PID-resistant module components
- // LID-effect nearly 0%
- // Use of 60 high-efficiency bifacial-cells
- // extremely solid thanks to laminated safety glass